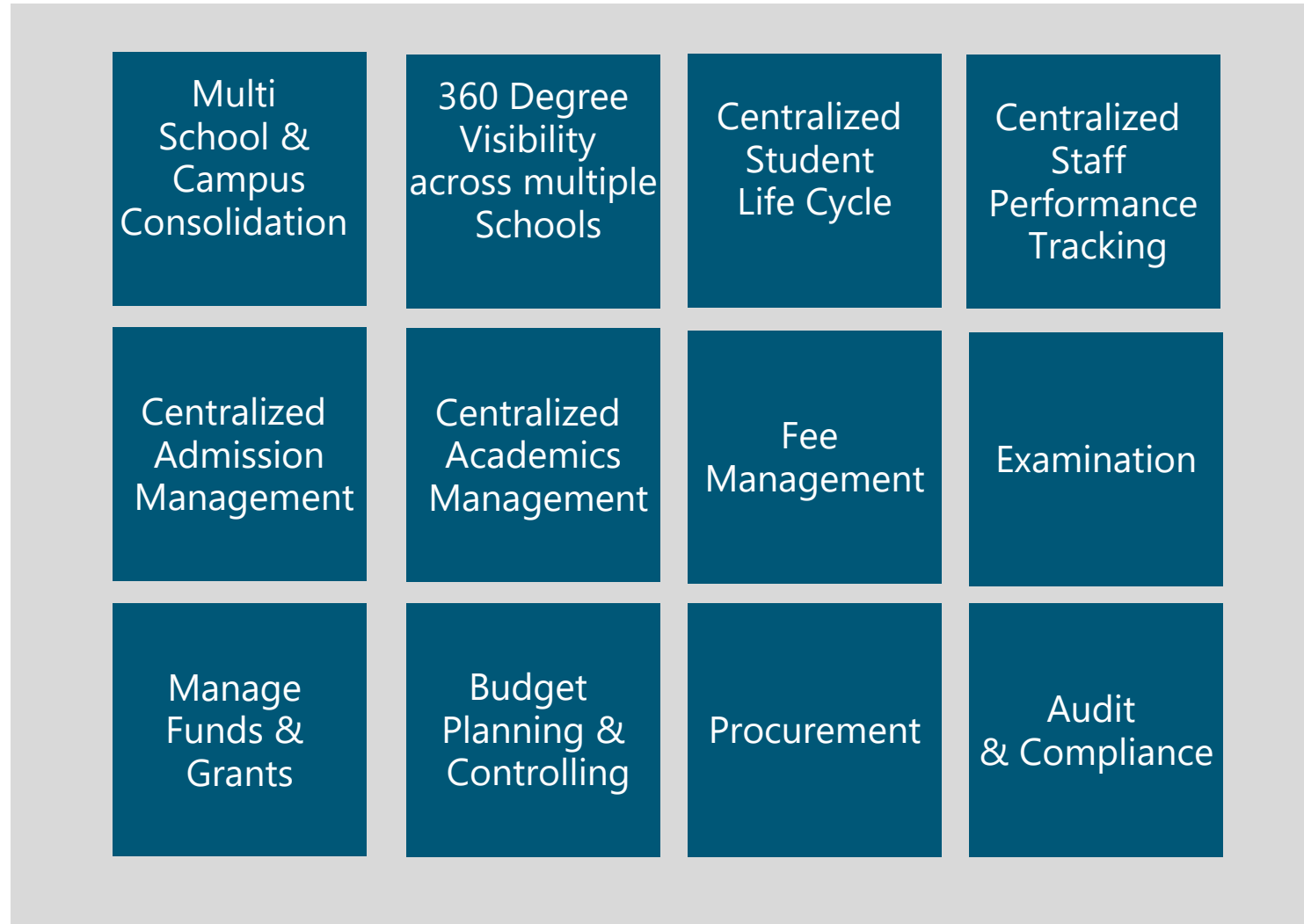




Microsoft Dynamics 365 In Education Sector by Maison Consulting & Solutions



Key Education Trends for Education



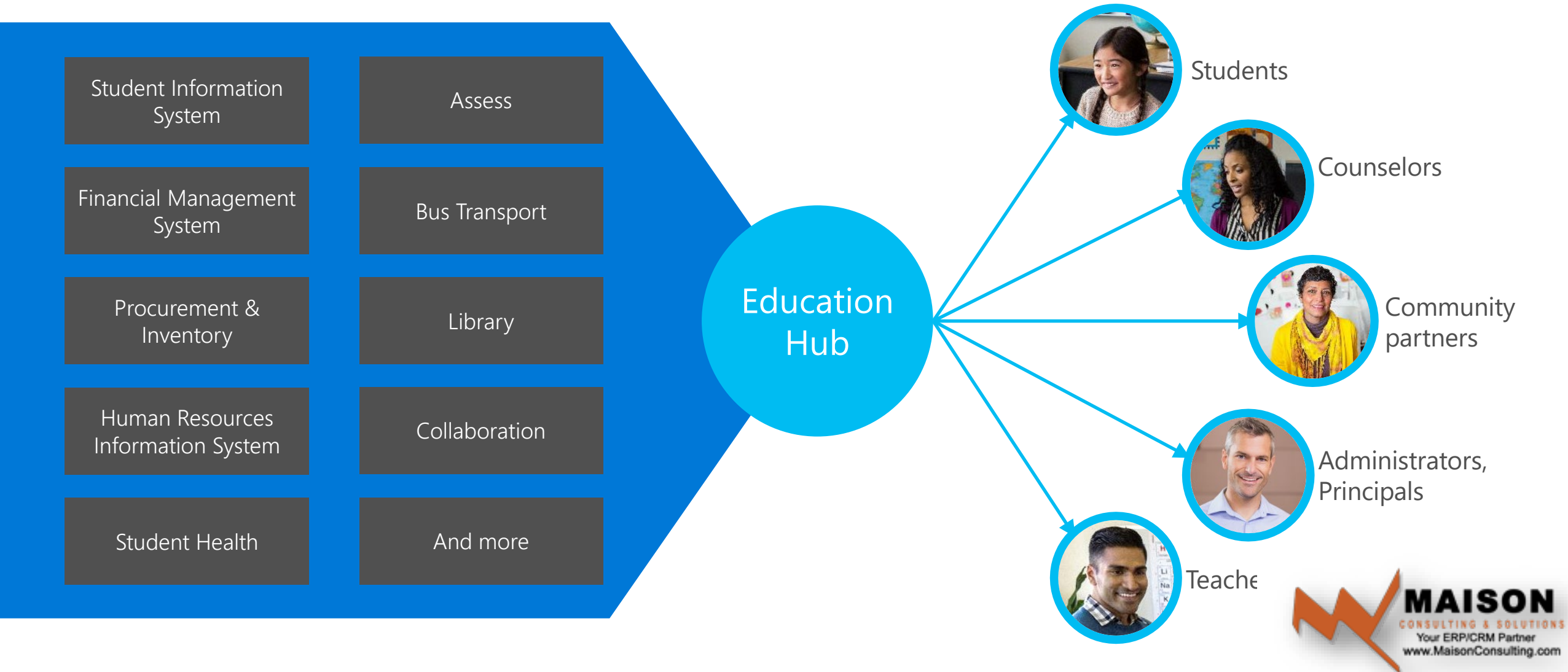
Accountability

Transparency

Efficiency









Education Hub

Bringing together disparate systems in a unified interface, customized for different users



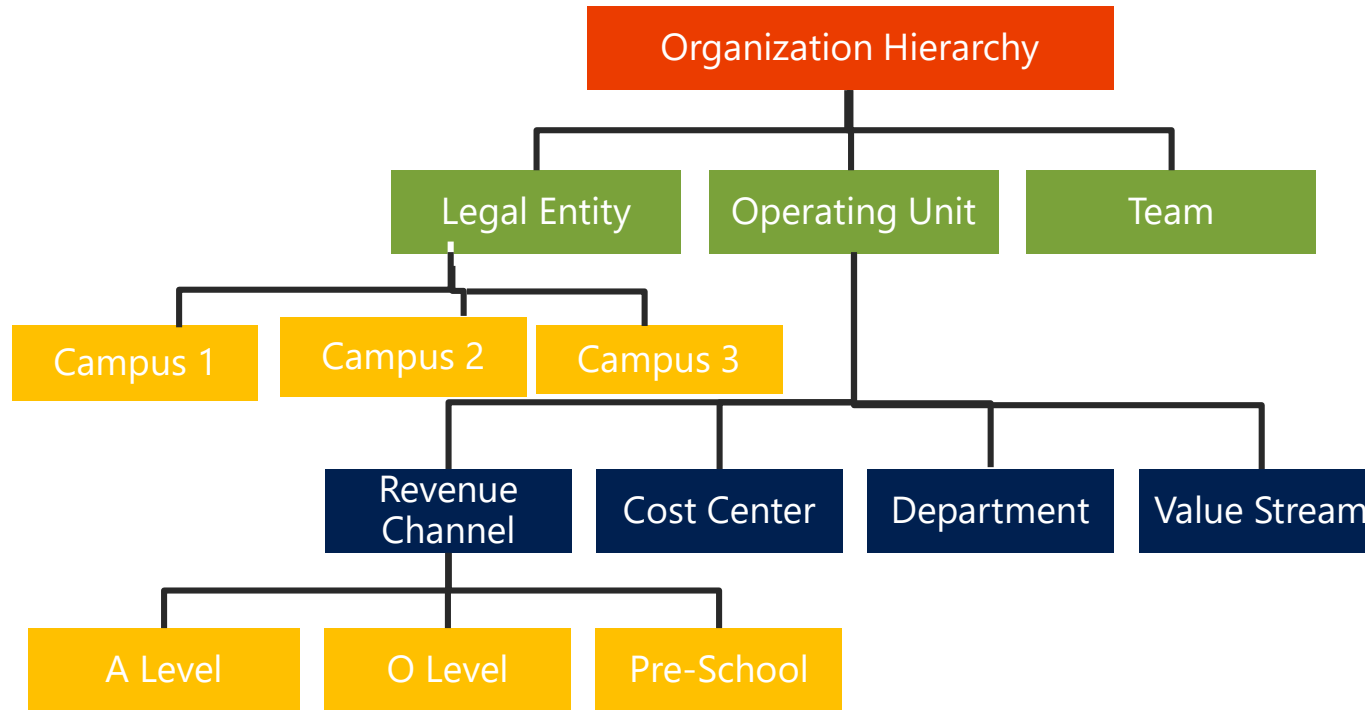
Dynamics 365 for School

Implement the Platform, deploy workloads

 Student Services	Case Management	Self-Service and Communities	Alumni Management	Enquiry Management	Application Processing	Admissions	Student Support	Knowledge Base
 Marketing *	+ 	Campaign Management	Event Management					
 Portals	Parent Portal	Enquiry Submission	Communities	Self Service	Applications	Event Registration	Student Portal	Teacher Portal
 Microsoft Social Engagement	Social Segmentation	Student Engagement	Sentiment Analysis					
 Finance and Operations	General Ledger	Accounts Payable	Accounts Receivable	Budgeting				
 SharePoint	Document Management							
 Bot Framework	Customer Service	Knowledge Base						

Organization Structure

Intuitively model your organization graphically



Front Office
Workloads

Back Office
Workloads

Technology

Microsoft Dynamics 365

Intelligent business applications in the cloud



Microsoft AppSource

Microsoft Dynamics 365



Sales



Customer Service



Finance and Operations



Field Service



Project Service



Marketing + Adobe



Retail



Talent



Power BI

Cortana Intelligence

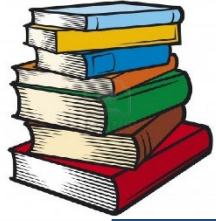
Azure IoT

Common application platform: PowerApps, Microsoft Flow, Common Data Model

Microsoft Dynamics 365 Complete Solution

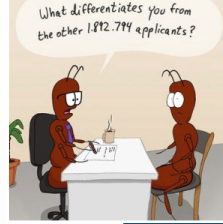


CMS FEATURES LIST



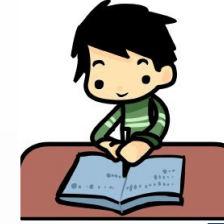
MASTER RECORDS

- Campus Management
- Schools Management
- Department Management
- Program Management
- Batch Management
- Course Catalog
- Semester Management
- Batch Courses Management (Road Map)
- Academic Calendar Management
- Section Management



ADMISSION

- Visitor Profile Management
- Applicant Management
- Applicant Details Records Management (Previous Education Details, Working Experience, Test Details, Contact Details)
- Aggregate calculation
- Test slip generation
- Entry Test information
- 1st payment challan
- Attachment of records regarding applicants
- SMS/Email Alert



STUDENTS

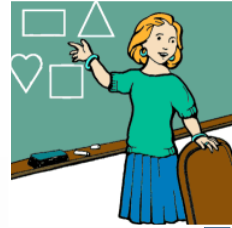
- Student Management
- Students details data
- Attachment of records regarding Students
- Student Payment schedule
- Student payment
- Student invoice
- Online Student Portal
- Online Assignment Submission
- View Online Course, Payments, Grading, Attendance Status
- Online Student courses registration process (Add/Drop/Withdraw)
- Online Student inquiry
- Online Student clearance
- Student Degree, Transcript, Progress Report, Semester Progress Report Generation
- Online Fee Voucher Printing
- SMS/Email Alert

CMS FEATURES LIST



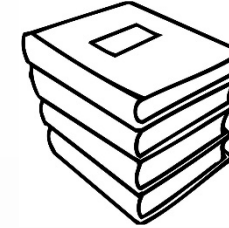
MARKETING

- Marketing List Management
- Campaign Management
- Event Management
- Campaign/Event Activities
- Campaign/Event Responses



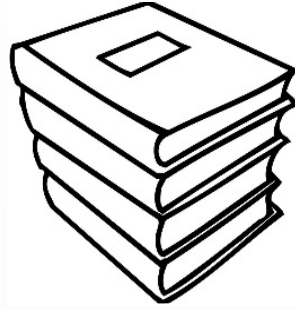
FACULTY PROFILE

- Faculty profile management
- Faculty details data management
- Attachment of records regarding faculty
- Faculty course offering
- Online Faculty portal
- Online Assessment marking
- Online Attendance
- Online Assignment to Student with attachments
- Online Grade calculation process (Manual Grading, Relative Grading, 3rd one (SEN Grading))
- Dual Authentication
- Online Result Submission
- SMS/Email Alert
- Feedback Management



EXAMINATION

- Students details data
- Assessment marking
- Exam Scheduling
- Date sheet generation reports
- Grade calculation process (Manual Grading, Relative Grading, 3rd one (SEN Grading))
- Result Submission
- Result Approval Process
- Student Degree, Transcript, Progress Report, Semester Progress Report Generation
- Grade Change Process
- SMS/Email Alert



MISCELLANEOUS PROCESS

- Time table scheduling
- Result Approval Process
- Status wise management of records, including: Visitors, Applicants, Students, Student courses, Faculty, Faculty courses
- Bulk Approval of Registration

Our Education Experience



**40+ Purpose Built Schools &
800+ Public Adopted Schools**

888

SCHOOLS NATIONWIDE

285000

STUDENTS

6059 +

TEACHERS

Our Education Experience



17,000+	96%	91%	125+	20:1	19,000+
Students	Student Satisfaction	Employment Rate in Six Months	Programs	Student-Faculty Ratio	Alumni Network
19	200+	60+	130,000+	21	700+
Schools and Institutes	Kanal Campus	Clubs and Societies	Books in Library	Online Databases	Faculty Members
200+	60+	130,000+	21	700+	165+
Kanal Campus	Clubs and Societies	Books in Library	Online Databases	Faculty Members	PhD Faculty Members

Our Education Experience



- Budgeting
- Financials
- Procurement
- Inventory
- Human Resource Management
- Payroll



- Budgeting
- Financials
- Procurement
- Inventory
- Human Resource & Payroll



- Admissions
- Academics Management
- Student Affair Management
- Examination
- Budgeting
- Financials
- Procurement
- Inventory
- Human Resource Management
- Payroll



- Budgeting
- Financials
- Procurement
- Inventory
- Human Resource Management
- Payroll



- Budgeting
- Financials
- Procurement
- Inventory
- Human Resource Management
- Payroll



- Budgeting
- Financials
- Procurement
- Inventory
- Human Resource Management
- Payroll



Thank You...